



Drinking Water Protection Benefits of CRP

The protection of our drinking water resources and public health is an important benefit of the CRP Program.



More Information

For more information on the Continuous Sign-Up for Wellhead Protection Areas, contact your County USDA FSA Office, Natural Resource Conservation District, or Soil and Water Conservation District.



Protecting Your Drinking Water

Continuous Sign-Up Conservation Reserve Program (CRP)

Groundwater aquifers directly connected to the land surface have the potential to become contaminated by a variety of agricultural and other land use activities.

The continuous sign-up CRP provides producers with an opportunity to help protect public drinking water resources and be compensated for establishing and maintaining native vegetation in a State-approved WHPA.

Visit these Web sites:



MN Dept. of Health WHP:

www.health.state.mn.us/divs/eh/water/swp/whp/index.htm

USDA FSA: www.fsa.usda.gov

MN Rural Water Association: www.mrwa.com



This brochure was developed by Minnesota Rural Water Association in cooperation with the Minnesota USDA FSA and Minnesota Department of Health.



For Cropland Within Wellhead Protection Areas (WHPA)



The CRP is a voluntary program that helps producers protect fragile agricultural lands, such as land located in a WHPA.

Conservation Reserve Program (CRP)

Producers with cropland located within a State-approved WHPA may enroll their property in the continuous sign-up CRP anytime during the year!

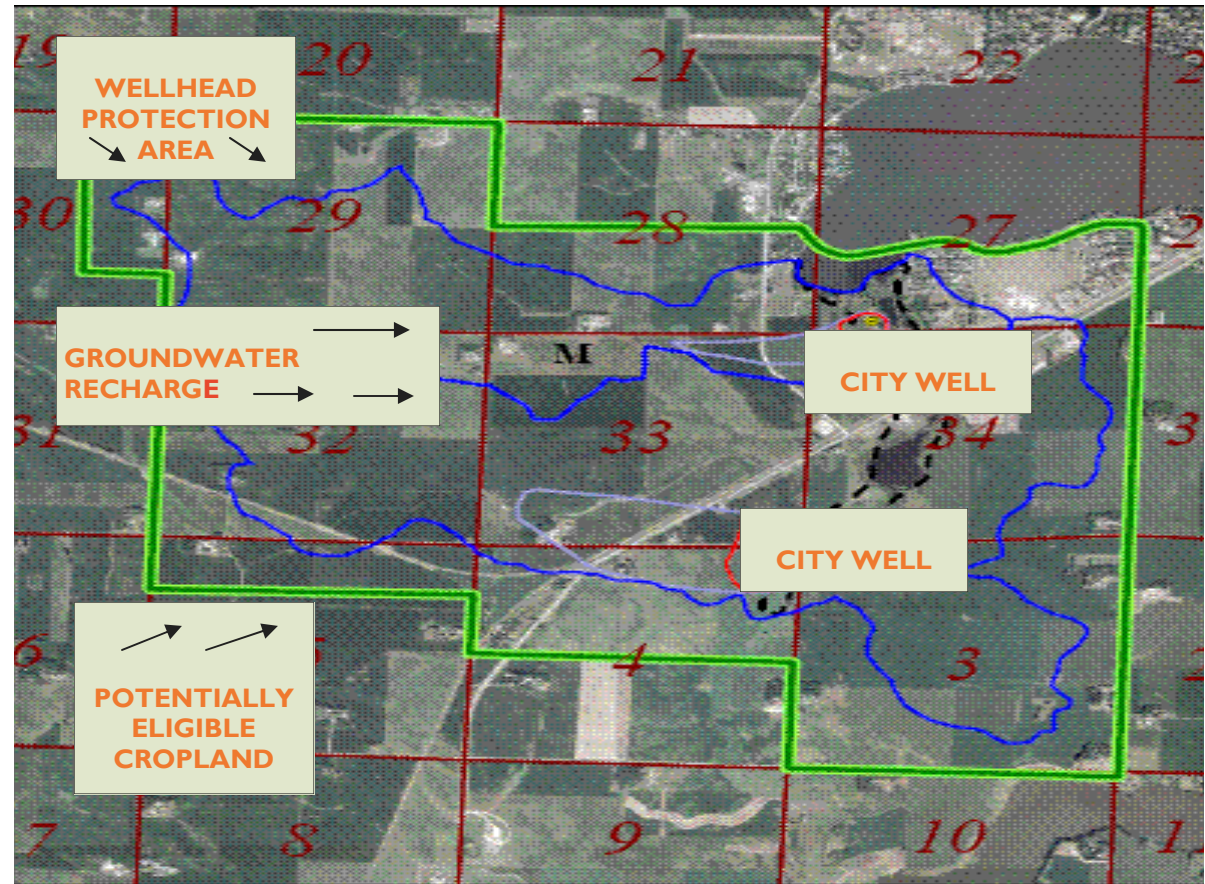
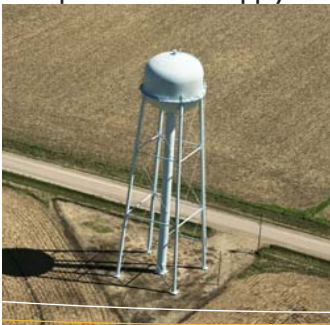
Wellhead Protection (WHP): Protecting Local Drinking Water Supplies

USDA Farm Service Agency's (FSA) CRP is a voluntary program available to help producers establish native vegetation on fragile agricultural lands.

Native vegetation is established on agricultural land to protect surface water and drinking water resources, conserve soil and enhance wildlife habitat. Producers who enroll are compensated for their commitment and management of the CRP practices established on their property.

WHP is a program established to protect groundwater and drinking water resources. The goal of WHP is to prevent well contamination by managing potential contaminant sources in all or a portion of a well's recharge area.

For public water supply wells in Minnesota, a Wellhead Protection Area (WHPA) is designated and approved by the local public water supplier and the MN Dept. of Health. Public water supply wells may be impacted by agricultural practices because of local geology and aquifer



Continuous Sign-Up CRP for WHP—Eligibility Requirements



ACREAGE MUST BE:

- Located in a State-approved WHPA, → Considered cropland by FSA,
- Cropland planted to an agricultural commodity four of six years,
- Owned for at least one year prior to offering land for enrollment.

Terms: producers enter into a 10 to 15 year contract and agree to maintain and manage the practice.

Rates: Annual per acre rental based on 3 most predominant soils.

Other Payments Include: Up to 50% cost share assistance to establish practice, 40% practice incentive payment and increased soil rental rates for land located in a WHPA.