

## DRINKING WATER PROTECTION BENEFITS OF CRP

The protection of our drinking water resources and public health is an important benefit of the CRP Program. Groundwater aquifers directly connected to the land surface have the potential to become contaminated by a variety of agricultural and other land use activities.



The continuous sign-up CRP provides producers with an opportunity to help protect public drinking water resources and be compensated for establishing and maintaining native vegetation in a State approved WHPA.

### Websites:

#### **MN Dept. of Health WHP:**

[www.health.state.mn.us/divs/eh/water/swp/whp/index.htm](http://www.health.state.mn.us/divs/eh/water/swp/whp/index.htm)

#### **USDA FSA:**

[www.fsa.usda.gov](http://www.fsa.usda.gov)

#### **MN Rural Water Association:**

[www.mrwa.com](http://www.mrwa.com)



***For More Information on the Continuous Sign-Up CRP for Wellhead Protection Areas, please contact your County USDA FSA Office, Natural Resource Conservation District or Soil and Water Conservation District.***

*This brochure was developed by the Minnesota Rural Water Association in cooperation with the MN USDA FSA and MN Dept. of Health.*

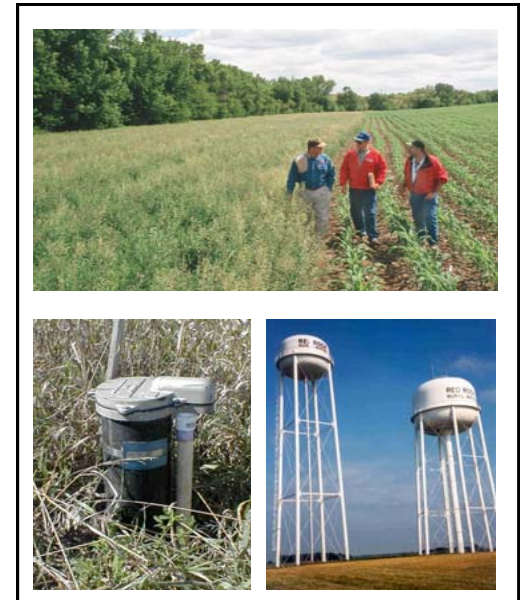
Published: 12/30/09



## **Continuous Sign-Up**

## **CONSERVATION RESERVE PROGRAM (CRP)**

***For Cropland Within  
Wellhead Protection Areas (WHPA)***



**The CRP is a voluntary program that helps producers protect fragile agricultural lands, such as land located in a WHPA.**

## CONSERVATION RESERVE PROGRAM (CRP)

USDA Farm Service Agency's (FSA) CRP is a voluntary program available to help producers establish native vegetation on fragile agricultural lands. Native vegetation is established on agricultural land to protect surface water and drinking water resources, conserve soil and enhance wildlife habitat. Producers who enroll are compensated for their commitment and management of the CRP practices established on their property.

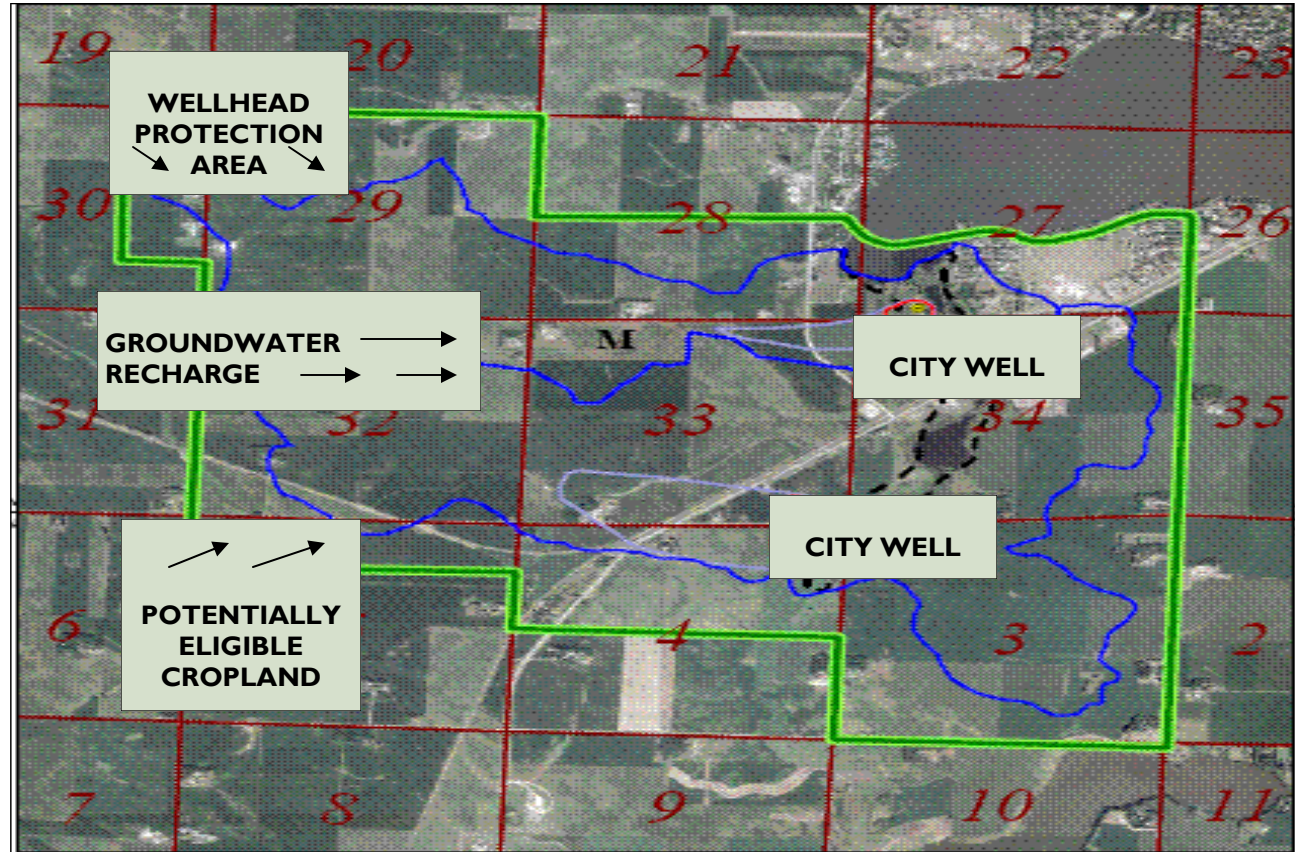
## WELLHEAD PROTECTION (WHP): PROTECTING LOCAL DRINKING WATER SUPPLIES

WHP is a program established to protect groundwater and drinking water resources. The goal of WHP is to prevent well contamination by managing potential contaminant sources in all or a portion of a well's recharge area.



For public water supply wells in Minnesota, a Wellhead Protection Area (WHPA) is designated and approved by the local public water supplier and the MN Dept. of Health. Public water supply wells may be impacted by agricultural practices because of local geology and aquifer conditions.

**Producers with cropland located within a State approved WHPA may enroll their property in the continuous sign-up CRP anytime during the year!**



## Continuous Sign-Up CRP for WHP

Eligibility Requirements:	Terms, Rates, Incentives:
<p><b>Acreage must be:</b></p> <ul style="list-style-type: none"> <li>⇒ Located in a State approved WHPA,</li> <li>⇒ Considered cropland by FSA</li> <li>⇒ Cropland planted to an agricultural commodity four of six years,</li> <li>⇒ Owned for at least one year prior to offering land for enrollment.</li> </ul> <p><b>Contact your County USDA FSA Office today!</b></p>	<p><b>Terms:</b> Producers enter into a 10 to 15 year contract and agree to maintain and manage the practice.</p> <p><b>Rates:</b> Annual per acre rental rate based on 3 most predominant soils.</p> <p><b>Other Payments Include:</b> Up to 50 % cost share assistance to establish practice, 40 % practice incentive payment and increased soil rental rates for land located in a WHPA.</p>